



# 志高掘进

## 工程螺杆式空气压缩机系列 Construction Screw Compressor ( Series )

SCY系列柴油移动螺杆机  
SCY Series Portable Diesel  
Screw Air Compressors



SCY系列柴油移动螺杆机  
SCY Series Portable Diesel  
Screw Air Compressors



深井专用柴固螺杆机  
Diesel Stationary Screw Air  
Compressor special for deep  
well drilling



SDY系列电动移动螺杆机  
SDY Series portable Electric  
Screw Air Compressors



SDY系列电动移动螺杆机  
SDY Series portable Electric  
Screw Air Compressors



SCF系列工频电固螺杆机  
SCF Series Power Frequency Electric  
Stationary Air compressors



- 国家级高新技术企业
- 产品列入国家火炬计划

- 中国履带式露天钻车行业标准制定单位
- 经信委评定的全液压露天钻车中国首台套单位

- 中国工程机械制造商30强
- 获评“浙江制造”称号单位

- National High Tech Enterprise
- Top 30 of China Construction Machinery Companies
- Industry Standard Maker of China Crawler Surface Drill Rig
- “First Set Full Hydraulic Surface Drill Rig Manufacture” Approved by National Commission of Economy and Information Technology
- Awarded as “Zhejiang Made” Company
- Listed by “National Torch Plan”



浙江志高机械股份有限公司

Zhejiang Zhigao Machinery Co., Ltd.

地址: 浙江省衢州市衢江经济开发区百灵北路15号  
 电话: 0570-3375622 3375599 3375666 3379118  
 传真: 0570-3375621  
 网址: www.zhigaojx.com  
 邮箱: zgjx@zhigaojx.com

Add: No.15 North Bailing Avenue, Qujiang Economic Development Zone,  
 Quzhou City, Zhejiang Province, China  
 Tel: 86-570-3375622 3375599 3375666 3379118  
 Fax: 86-570-3375621  
 Http: www.zhigaojx.com



注: 本公司对产品不断研究改进, 拥有设计变更权, 如作改动, 恕不另行通知。  
 Note: Products subject to constant improvements and changes without prior notice.

## 公司荣誉 Company Honors



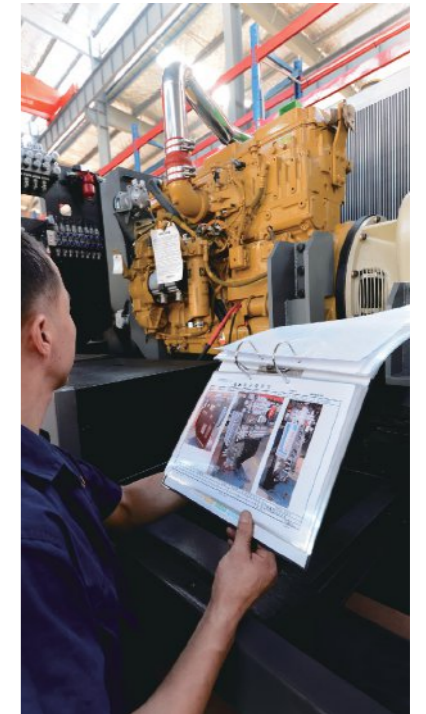
- 国家级高新技术企业
- 国内首台套产品
- 国家科技部列入“火炬计划”
- 福布斯财富榜上榜企业
- 浙江省先进制造业基地
- 浙江省专利示范企业
- 浙江省省级企业技术中心
- 浙江省著名商标
- 浙江省标准创新型企业
- 浙江省螺杆式空气压缩机能效等级评定检测规程的评审单位
- 公司研制的产品入选《军民两用高新技术民营企业及产品推荐目录》
- National High Tech Enterprise
- China First of the kind Product Release
- “Torch Plan” member by China Technology Ministry
- Listed on the Forbes Fortune Company List
- Many Zhejiang Provincial Honors and Awards
- The only official equipment provider for National Geothermal Energy Institute
- Official National Industry Standard for 【Track Type Surface Drill Equipment】 maker
- ISO9001:2008 and OHSAS18001:2007 Certificates
- 中国陆能地热泵设计研究院唯一指定的国内配套厂家
- 《履带式露天钻车》国家行业标准起草制定单位
- 浙江省新产品、高新技术产品
- 浙江省科技进步奖
- 浙江省重点培育的装备制造企业
- 中国工程机械制造商30强
- 浙江省守合同重信用单位
- 公司连续多年获得区长特别奖“技术创新奖”、“企业上台阶奖”
- 通过ISO9001：2008质量管理体系认证
- 通过OHSAS 18001:2007环境管理体系认证
- 通过GB/T28001-2001职业健康安全管理体系认证
- 2017通过“浙江制造”产品认证



## Company Introduction 公司介绍

浙江志高机械股份有限公司是一家从事系列空气压缩机和凿岩设备的研究开发、生产销售和应用服务的专业机构。产品广泛应用于工业气源、各类矿山开采和工程项目建设。企业以技术开发为核心，秉承“重细节、求高效、铸品质、创未来”的行动纲领，以“科技创新无限，志高掘进先锋”为经营理念。放眼全球，用争创世界一流的信心为客户提供产品和服务，为中国民族装备制造业的崛起和绿色矿山工程建设而努力前行！

Zhejiang “Zhigao” Machinery Co., Ltd. is a professional company engaged in research, development, production, sales, application and service of air compressors and rock drill machines. The ZEGA products are widely used in industry air supply, mining and construction projects. With technology development as the heart of company philosophy, Zhigao follows the guidelines of “detail oriented, high efficiency, quality first and creating future” and the business philosophy of “Constant science and technology innovations”. Zhigao is eyeing the global market with world class products and services and is working hard and moving forward to help the rise of China national machinery and equipment manufacture industry and the construction of green mines.



- 拥有国家专利73项 73 National Patents
- 衢州市博士工作站 Doctor degree training station in Quzhou
- 省级研发中心 Provincial Research & Development Center



## 产品升级特点

### Product Upgrade Features

1、全系列产品进行了结构优化,在提升机身强度的同时更注重了产品的牵引部件,保证移动安全。更加强了车身的负载能力,满足用户机身上部载物的要求,并安装了橡胶防撞块。

Full series product optimized for stronger frame and better towing protection and safety; stronger roof loading capabilities to meet customer load carry needs with rubber protection strips.



2、所有压力管路采用钢管连接,在满足密封的同时消除了胶管老化的风险,永不磨损并且美观大方。

All pressure pipes are connected with steel tubes, it has excellent sealing and protect rubber from prevent aging, never wear and has attractive appearance.



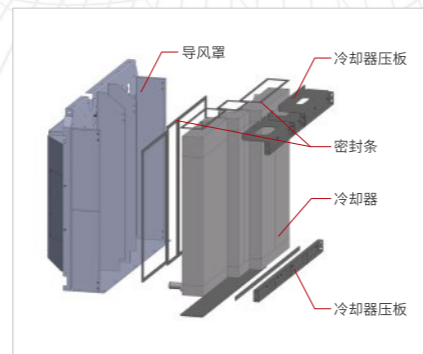
3、采用专利设计带安全滤芯的空滤总成,并全部采用不锈钢管制作的进气管。在保证过滤进气粉尘的同时,更解决了因原使用进气橡胶软管老化破损而使设备吸入不洁空气带来的损坏。

With Patent designed safety air filter unit and stainless steel air inlet pipes for guaranteed dust filter ability and better protection against dirty air due to rubber hose damage.



4、全新设计的冷却器,各单元独立安装,并由结构件和缓冲垫固定,没有任何受力点。消除了原产品因外罩变形而引起的冷却器损坏,即使更换也只需轻松换下损坏单元,而无需拆换冷却器总成。

All new designed cooler with independent modular unit and secured by structural component with cushion pad without any pressure points, effectively eliminating cooler damage by shroud deformation; independent damaged unit replacement made easy without removing the cooler assembly.



5、柴油螺杆机全部采用国际知名进口品牌控制器,并优化了界面,只需操作电源、开机、关机三个开关。操作过程的预热加载、停机前卸载、压力控制及发动机的喷油量自动完成,在保障设备正常运行的同时,消除了误操作引起的高压停机、喷油。同时,控制器作防水防潮保证。

Diesel portable compressors all with international brand name controller with optimized interface for only 3 switches to operate, power, on and off. Automatic preheating, loading and unloading process, pressure control and engine fuel injection, eliminating high pressure stop and oil outburst. Controller with water and moisture proof.



6、所有保养部件布置在触手可及位置,并设有资料箱和工具箱,在轻松保养设备的同时,防止用户资料丢失和因工具随手乱放而引起的如电瓶线短路起火花等隐患。

Easy access to all maintenance parts with document and tool box for better management of tools, records and safer for machine operation.



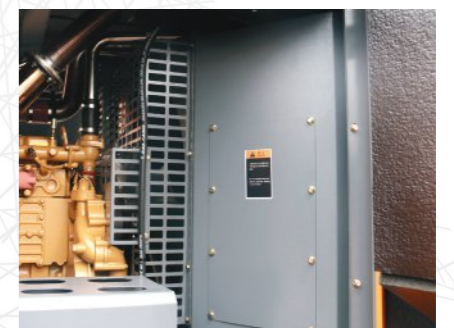
7、电移产品空气开关从电控柜中引出,外引电源和空气开关设在机体外侧并设计有安全设施电控柜加装柜门,在方便实用的同时保证安全。

Electrical portable machine with breaker and power switch easy to access and protected for convenience and safety.



8、新型导风罩设计使得冷却效率提升的同时加强安全防护等级。全车身吸音棉和后置车厢消音器设计使得运行噪音低于常规产品40%。

New designed protected cooler for higher efficiency and better safety protection. Full body sound absorbent cotton and rear car silencer designed to make operate noise reduce 40% less than normal products.



### 轻型移动螺杆式空气压缩机

Small Compact portable screw compressors

- 该系列产品为工程矿山所需 $\phi$ 80-110mm孔径潜孔钻、锚杆钻机, 各类风镐、凿岩机、喷浆机及各类气源而设计;
- 系列产品注重可靠性、坚固耐用的基础上优化控制系统, 大幅度降低了产品的能耗;
- 全系列产品采用国三发动机或IP55电机。
- This series primarily used with construction and mining required  $\phi$ 80-110mm DTH drill, bolting rig, various hand held drill machines, drifters, blasting equipment and various air source requirement;
- Reliable and durable with optimized control system for drastic drop of energy consumption;
- All with EU3A compatible engines or IP55 motors.



配套钻机推介:  
Recommended For Zhigao drill rig models

ZGYX-412A ZGYX-416-1

#### 电移动产品 Electrical Portable

型号 Model	额定排气量 Rated FAD	额定排气压力 Rated Pressure	电机功率 Motor Power	机头 Air End	电机防护等级 Motor Protection Class	重量 Weight	形式 Type
75SDY <sup>+</sup> -8S	13.2 m <sup>3</sup> /min	8 bar	75 kW	一级压缩 Single Stage Compression	IP55	2,020 kg	四轮 4 wheel
75SDY <sup>+</sup> -14.5	10 m <sup>3</sup> /min	14.5 bar	75 kW	一级压缩 Single Stage Compression	IP55	1,880 kg	两轮 2 wheel
75SDY <sup>+</sup> -17	11 m <sup>3</sup> /min	17 bar	75 kW	二级压缩 Two Stage Compression	IP55	2,500 kg	四轮 4 wheel

#### 柴移动产品 Diesel Portable

型号 Model	额定排气量 Rated FAD	额定排气压力 Rated Pressure	柴油机 Engine	机头 Air End	重量 Weight	形式 Type
40SCY-7	4.5 m <sup>3</sup> /min	7 bar	36.8 kW(锡柴)	一级压缩 Single Stage Compression	860 kg	两轮 2 wheel
40SCG-7	4.5 m <sup>3</sup> /min	7 bar	36.8 kW(锡柴)	一级压缩 Single Stage Compression	750 kg	固定 SKID
40CKY <sup>+</sup> -8	5 m <sup>3</sup> /min	8 bar	36.8 kW(锡柴)	一级压缩 Single Stage Compression	730 kg	四轮 4 wheel
110SCY <sup>+</sup> -8	13 m <sup>3</sup> /min	8 bar	118 kW(玉柴股份)	一级压缩 Single Stage Compression	2,300 kg	四轮 4 wheel
110SCY <sup>+</sup> -10	12.5 m <sup>3</sup> /min	10 bar	118 kW(玉柴股份)	一级压缩 Single Stage Compression	2,300 kg	四轮 4 wheel
110SCY <sup>+</sup> -14.5	11 m <sup>3</sup> /min	14.5 bar	118 kW(玉柴股份)	一级压缩 Single Stage Compression	四轮(2,280 kg) 两轮(2,200 kg)	四轮/两轮 4/2 wheel

## 中型移动螺杆式空气压缩机 Medium Portable Screw Compressors

- 该系列产品为工程矿山所需 $\phi 115\text{mm}$ 孔径潜孔钻、锚杆钻机, 各类风镐、凿岩机、喷浆机及各类气源而设计;
- 系列产品优化风道设计, 并将柴油消音器置于冷却器后端的独立单元, 在提升冷却效果的同时使产品运行噪音下降40%;
- 全系列产品采用国三发动机或IP55电机。

- This series primarily used with construction and mining required  $\phi 115\text{mm}$  DTH drill, bolting rig, various hand held drill machines, drifters, blasting equipment and various air source requirement;
- Optimized new design with diesel engine muffler behind the cooler end independent unit for higher cooling efficiency and 40% lower noise reduction;
- All with EU3A compatible engines or IP55 motors.



配套钻机推介:  
Recommended For Zhigao drill rig models  
ZGYX-420T ZGYX-420D ZGYX-425

电移动产品 Electrical Portable							
型号 Model	额定排气量 Rated FAD	额定排气压力 Rated Pressure	电机功率 Motor Power	机头 Air End	电机防护等级 Motor Protection Class	重量 Weight	形式 Type
90SDY <sup>+</sup> -8S	15.5 m <sup>3</sup> /min	8 bar	90 kW	一级压缩 Single Stage Compression	IP55	2,125 kg	四轮 4 wheel
90SDY <sup>+</sup> -14.5	13 m <sup>3</sup> /min	14.5 bar	90 kW	一级压缩 Single Stage Compression	IP55	2,145 kg	两轮 2 wheel
90SDY <sup>+</sup> -14.5S	13 m <sup>3</sup> /min	14.5 bar	90 kW	一级压缩 Single Stage Compression	IP55	2,120 kg	四轮 4 wheel
90SDY <sup>+</sup> -17	13 m <sup>3</sup> /min	17 bar	90 kW	二级压缩 Two Stage Compression	IP55	2,600 kg	四轮 4 wheel

柴移动产品 Diesel Portable							
型号 Model	额定排气量 Rated FAD	额定排气压力 Rated Pressure	柴油机 Engine	机头 Air End	重量 Weight	形式 Type	
141SCY <sup>+</sup> -15	15 m <sup>3</sup> /min	15 bar	140 kW(玉柴股份)	一级压缩 Single Stage Compression	四轮(2,520 kg) 两轮(2,450 kg)	四轮/两轮 4/2 wheel	
141SCY <sup>+</sup> -15B	15 m <sup>3</sup> /min	15 bar	142 kW(康明斯)	一级压缩 Single Stage Compression	2,520 kg	四轮 4 wheel	
141SCY <sup>+</sup> -15G(高原)	15 m <sup>3</sup> /min	15 bar	140 kW(玉柴股份)	一级压缩 Single Stage Compression	2,520 kg	四轮 4 wheel	
158SCY <sup>+</sup> -17	15 m <sup>3</sup> /min	17 bar	162 kW(玉柴股份)	一级压缩 Single Stage Compression	四轮(3,300 kg) 两轮(3,100 kg)	四轮/两轮 4/2 wheel	
162SCY <sup>+</sup> -17	16 m <sup>3</sup> /min	17 bar	162 kW(玉柴股份)	二级压缩 Two Stage Compression	3,540 kg	四轮 4 wheel	

### 重型移动螺杆式空气压缩机 Large portable screw compressors

- 该系列产品为工程矿山所需φ138mm及以上孔径潜孔钻、锚杆钻机, 各类风镐、凿岩机、喷浆机及各类气源而设计;
- 系列产品全新设计的进气阀和优化的气路控制系统在减少控制元件、减小故障发生源的前提下可使柴油机几乎在空载状态下轻松起劲;
- 全系列产品采用国三发动机或IP55电机。
- This series primarily used with construction and mining required φ138mm DTH drill, bolting rig, various hand held drill machines, drifters, blasting equipment and various air source requirement;
- All new designed air inlet valve and optimized air control system with less control parts and less breakdown possibilities for engine to easily start at idle;
- All with EU3A compatible engines or IP55 motors.



#### 电移动产品 Electrical Portable

型号 Model	额定排气量 Rated FAD	额定排气压力 Rated Pressure	电机功率 Motor Power	机头 Air End	电机防护等级 Motor Protection Class	重量 Weight	形式 Type
110SDY <sup>+</sup> -8	20 m <sup>3</sup> /min	8 bar	110 kW	一级压缩 Single Stage Compression	IP55	2,605 kg	四轮4 wheel
110SDY <sup>+</sup> -17	15 m <sup>3</sup> /min	17 bar	110 kW	二级压缩 Two Stage Compression	IP55	3,000 kg	四轮4 wheel
132SDY <sup>+</sup> -8	24 m <sup>3</sup> /min	8 bar	132 kW	一级压缩 Single Stage Compression	IP55	2,715 kg	四轮4 wheel
132SDY <sup>+</sup> -13	17 m <sup>3</sup> /min	13 bar	132 kW	一级压缩 Single Stage Compression	IP55	2,665 kg	四轮4 wheel
132SDY <sup>+</sup> -17	15 m <sup>3</sup> /min	17 bar	132 kW	一级压缩 Single Stage Compression	IP55	2,665 kg	四轮4 wheel
132SDY <sup>+</sup> -18	17 m <sup>3</sup> /min	18 bar	132 kW	二级压缩 Two Stage Compression	IP55	3,500 kg	四轮4 wheel
185SDY <sup>+</sup> -17	19 m <sup>3</sup> /min	17 bar	185 kW	一级压缩 Single Stage Compression	IP55	3,550 kg	四轮4 wheel
185SDY <sup>+</sup> -24	22 m <sup>3</sup> /min	24 bar	185 kW	二级压缩 Two Stage Compression	IP55	4,100 kg	四轮4 wheel

#### 柴移动产品 Diesel Portable

型号 Model	额定排气量 Rated FAD	额定排气压力 Rated Pressure	柴油机 Engine	机头 Air End	重量 Weight	形式 Type
186SCY <sup>+</sup> -19	17 m <sup>3</sup> /min	19 bar	191 kW(玉柴股份)	二级压缩 Two Stage Compression	3,900 kg	四轮4 wheel
198SCY <sup>+</sup> -21	19 m <sup>3</sup> /min	21 bar	191 kW(玉柴股份)	二级压缩 Two Stage Compression	3,700 kg	四轮4 wheel
220SCY <sup>+</sup> -22	22 m <sup>3</sup> /min	22 bar	220 kW(玉柴股份)	二级压缩 Two Stage Compression	4,100 kg	四轮4 wheel
298SCY <sup>+</sup> -24	29 m <sup>3</sup> /min	24 bar	295 kW(玉柴股份)	二级压缩 Two Stage Compression	5,100 kg	四轮4 wheel

配套钻机推介:  
Recommended For Zhigao drill rig models

ZGYX-420T ZGYX-425 ZGYX-430



### 柴油固定式空气压缩机

Diesel box type compressors

- 该系列产品为水井、地热等工程所需φ115-254mm孔径水井钻机及相关压缩机气站而设计；
  - 系列产品在秉承移动式空气压缩机优秀特征的前提下，针对产品连续使用和运输尺寸要求的特点进行了多项升级优化，产品更耐用、油耗更低。
  - 全系列产品采用国三发动机。
- This series primarily used with water well and geothermal project required φ115 - 254 mm drill rigs and various other air source requirement;
  - To add to the benefits of the portable compressors, this series specially good for continues running and with transportation requirement in consideration, upgraded for better durability and lower fuel consumption ;
  - All with EU3A compatible engines.

柴油固定式空气压缩机主要技术参数 Diesel Box type					
型号 Model	额定排气量 Rated FAD	额定排气压力 Rated Pressure	柴油机 Engine	机头 Air End	重量 Weight
S60 <sup>+</sup>	18 m <sup>3</sup> /min	18 bar	162 kW (玉柴股份)	一级压缩 Single Stage Compression	3,000 kg
S85D <sup>+</sup>	24 m <sup>3</sup> /min	22 bar	228 kW (玉柴股份)	二级压缩 Single Stage Compression	3,560 kg
S95CD <sup>+</sup>	29 m <sup>3</sup> /min	24 bar	295 kW (玉柴股份)	二级压缩 Two Stage Compression	4,700 kg
S100D <sup>+</sup>	31 m <sup>3</sup> /min	25 bar	309 kW (锡柴)	二级压缩 Two Stage Compression	4,600 kg
S125D <sup>+</sup>	36 m <sup>3</sup> /min	30 bar	410 kW (康明斯)	二级压缩 Two Stage Compression	5,600 kg



配套钻机推介：  
Recommended For Zhigao drill rig models  
ZGSJ-200

### 电动固定式空气压缩机 Electrical Stationary Compressors

- 该系列产品为工程、矿山所需各类凿岩机、风镐及相关气动工具而配套设计；
  - 全系列产品考虑到用户机房的安装布置采用侧排风，根据工况的实际情况加装了吊架，使得设备可用挖掘机或装载机轻松移动和安装；
  - 全系列产品使用IP55电机。
- This series primarily designed for applications of construction and mining required rock drills, hand held drills and air tools;
  - Side air outlets for indoor installation layout and hanging hooks for convenient handling by excavators and loaders;
  - All with IP55 motors.

电动固定式空气压缩机主要技术参数 Electrical Stationary Compressor Main Technical Specifications

型号 Model	额定排气量 Rated FAD	额定排气压力 Rated Pressure	电机功率 Motor Power	机头 Air End	电机防护等级 Motor Protection Class	重量 Weight
45SCF <sup>+</sup> -8B	7.5 m <sup>3</sup> /min	8 bar	45 kW	一级压缩 Single Stage Compression	IP55	920 kg
55SCF <sup>+</sup> -8B	9.8 m <sup>3</sup> /min	8 bar	55 kW	一级压缩 Single Stage Compression	IP55	1,040 kg
75SCF <sup>+</sup> -8B	13.2 m <sup>3</sup> /min	8 bar	75 kW	一级压缩 Single Stage Compression	IP55	1,585 kg
90SCF <sup>+</sup> -8B	15.5 m <sup>3</sup> /min	8 bar	90 kW	一级压缩 Single Stage Compression	IP55	1,695 kg
110SCF <sup>+</sup> -8B	20 m <sup>3</sup> /min	8 bar	110 kW	一级压缩 Single Stage Compression	IP55	1,955 kg
132SCF <sup>+</sup> -8B	24 m <sup>3</sup> /min	8 bar	132 kW	一级压缩 Single Stage Compression	IP55	2,065 kg
90SCFT <sup>+</sup> -8A	20 m <sup>3</sup> /min	8 bar	90 kW	二级压缩 Two Stage Compression	IP55	2,185 kg
110SCFT <sup>+</sup> -8A	23 m <sup>3</sup> /min	8 bar	110 kW	二级压缩 Two Stage Compression	IP55	2,490 kg
132SCFT <sup>+</sup> -8A	27 m <sup>3</sup> /min	8 bar	132 kW	二级压缩 Two Stage Compression	IP55	2,580 kg



### 售后服务与零配件供应 After sales Services And Spare Parts Supply

#### 志高掘进正品零件 Zhigao Juejin Genuine Parts

志高掘进客户应使用正宗厂家配件和各种油品以确保机器寿命和使用性能，并保证机器长期平稳运转；  
Customers should always use authentic or factory approved parts and oils to ensure the life and performance, and the long lasting smooth running of the machine;

#### 志高掘进正品零件渠道 Zhigao Juejin Approved spare parts channel

- 1、志高掘进将为满足考核要求，具备客户服务需要能力的经销商正式授牌，以保证用户能采购到正品配件。
- 2、志高掘进将在各省会城市设立省级配件调拨中心，保证所有用户的配件服务需求都将在最短时间内满足。

In order to ensure that end-users to be able to purchase quality Zhigao approved spare parts, dealers passed criterias of Zhigao are officially authorized. Zhigao Juejin will establish local distribution centers via dealers to ensure that all needs of spare parts and services will be responded in time.



#### 正品零配件 Genuine Parts

